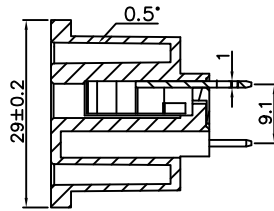
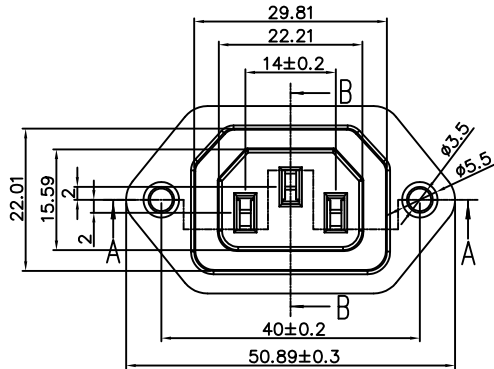
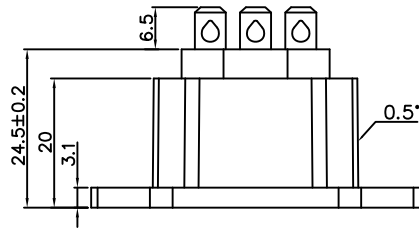


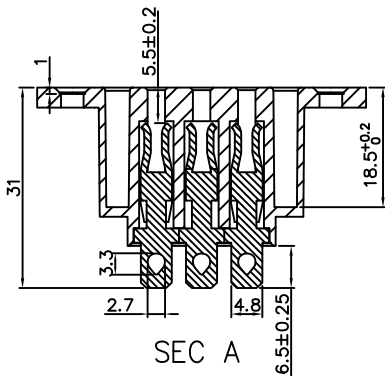
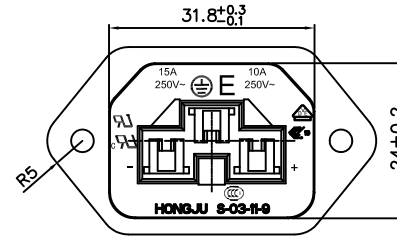


S-03-11-9-2

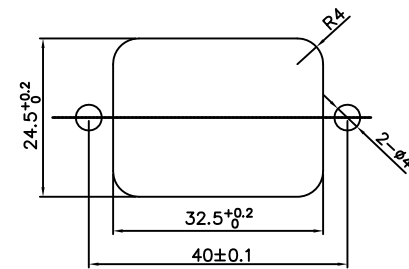
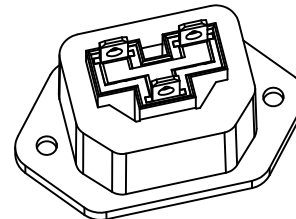
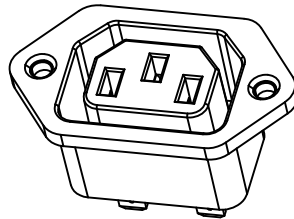
Rating: 15A 250V AC (CCC)  
 30A 125V AC(UL CUL)  
 Contact Resistance: 50mΩ Max  
 Insulation Resistance: DC 500V 100MΩ Min  
 Dielectric Strength: AC2000V 1 minute  
 Operating Temperature: 0°C ~85°C



SEC B



SEC A



CUT-OUT

MATERIAL:  
 Body:PA66+15%GF  
 Terminal:Phos-copper Au plated

		公差 TOLERANCES		.X± 0.3 .XX± 0.15		角度 ANGLE ± 1°		单位 DIMENSION UNIT mm.		
			版本 VERSION	A1	比例尺 SCALE	NONE	日期 DATE	2019.05.06	品名 TITLE	图号 DRAWING NO
A0	New Issue	2019.05.06	N/A	核准	核对		绘图		S-03-11-9-2	S-03-11_A1
版本 VER.	变更说明 CHANGE DESCRIPTION	日期 DATE	ECN NO.	APPROVED BY	CHECKED BY		DRAWN BY			